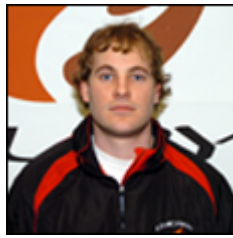


What you get: 96's



**Head Coach
Dana Bannerman**

**First Asst.
Brett Roat**

The teams will play anywhere from 50-80 games over the course of the season. The goal will be to prepare every player to perform at the peak by the State Tournament in February.

Team practices and home games will be held at the **Arctic Ice Arena** in Orland Park.

Dress Code

Home Khaki pants and Fury Golf Shirt. Fury hat may be properly worn.
Away Fury Warm-up Suit and gym shoes Fury hat may be properly worn.

New for 2008

GET FAST Hockey Treadmill (once a week)

The team will be broken into groups of 5 players of equal skating level to maximize the treadmill work out. The group will be trained by a **GET FAST** trainer.

Synthetic-ice once a week

The off-ice will be broken into two 30-45 min slots. ½ the team will work out in the synthetic room. At the next practice, the groups will switch and the group that was on the hockey treadmill with Get Fast will now do synthetic and so on. The small group size will maximize the training and minimize the time the player has to spend at the rink.



Two practice slots a week for 26 weeks:

2 hours and 50 min. of team ice a week

Mondays 6:10 – 7:10 Full Ice 7:10 – 7:40 ½ Ice

Wednesdays 6:20 – 7:40 Full Ice

A skills session every other week:

1 Skills hour every other week

Tuesdays 7:50 – 8:50

A goalie session every other week:

1 Goalie hour every other week

Mondays 5:00 – 6:00

A minimum of 1 film session a month:

Total of 5 film sessions

Total practice Ice time per week:

3 hours and 30 min. per week

Three AAA Tournaments:

Nike Bauer AAA Tournament

Fury AAA Fall Classic

One other AAA Tournament

Cost

5,575.00



What you need:

(Required Equipment for all Chicago Fury teams)

Fury Jerseys Home & Away, Fury Socks Home and Away, Fury Hockey Bag, Fury Shell or Pants, Red, White and Black Gloves, Black Helmet.

(All Players will receive 10% off on all FURY equipment purchased at the Arctic Proshop. (jerseys and socks not included))

Fury Equipment Package:

Fury Warm-up Suit, Fury Golf Shirt, Fury practice socks and jersey, Fury workout shorts and shirts, and Fury workout Sweat Suit.

Total \$300.00



Mandatory Fundraiser Requirement

Each Player will be required to purchase 30- \$10 (\$300) raffle tickets which can then be resold or kept for a chance to win the raffle prizes. Additional raffle tickets can be sold with 80% of the addition monies being applied to your player fees (up to 100% of the Fee).

Conditioning Camp and Other Camps

There will be a mandatory conditioning camp for ALL Fury players from approximately August 11-16. Players will skate and do off-ice conditioning to prepare for the season. There will be approximately 10 hours of on-ice and 5 hours of off-ice training and the fee will be approximately \$395.

Fury Family Fun Night

The second annually "Fury Family Fun Night" Will be held on Friday night of the camp week. This is a great time for all the teams and family to meet each other and the non-hockey playing sibling to have some fun at the rink.



CHICAGO FURY PROGRAM COSTS

The Chicago Fury is a section 501 (C)(3) Not For Profit Organization. Our reward comes when we see our players play at the next level. The only compensation the Fury provides is for the few coaches and directors who spend countless hours trying to provide the best possible learning and development environment they can for all players. Player fees below are based on the cost of ice, coaching, referees, and other administrative and organizational expenses.

CHICAGO FURY 2008-2009 Season Fee and Payment Schedule

Card Signing		
July 1 st	Fury Equipment package	\$300.00
	Raffle Min	\$300.00
	Pre Season Camp	\$395.00
August 1 st	Fees	\$1,100.00
September 1 st	Fees	\$1,100.00
October 1 st	Fees	\$1,100.00
November 1 st	Fees	\$1,100.00
December 1 st	Fees	\$1,175.00

Player Fees not current as of the 15th of any month, will not be allowed to participate in any team function until payment is current. In addition an 18% late fee will be applied on all late payments at the rate of 1.5% per month. All returned checks will incur a \$25.00 bank charge.